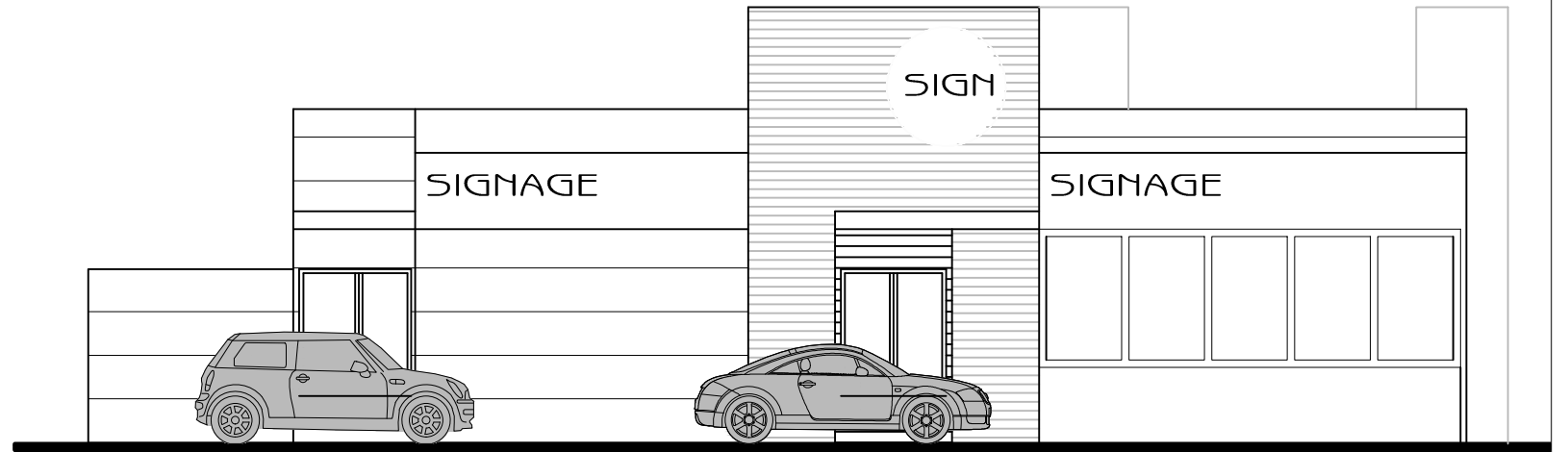
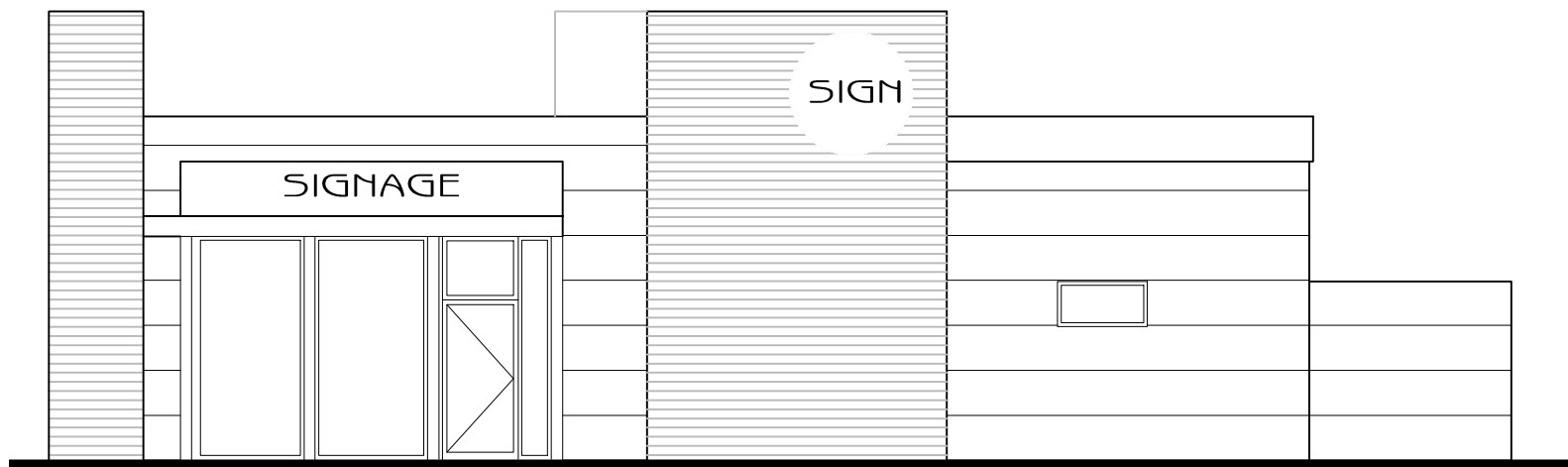


ELEVATION FACING NORTH/ WEST



ELEVATION FACING SOUTH/ WEST



ELEVATION FACING NORTH/ EAST



ELEVATION FACING SOUTH/ EAST

PROPOSED ELEVATIONS
 SHAFTSBURY AVENUE, NE34 9QD
 3266_PL04 1:100@A3

MAY'15

DATE

REVISIONS

INITIAL

